

Fish, Wildlife and Water Quality Department Update

Grant PUD Commission Meeting June 13, 2023

Operate Responsibly by Attaining Environmental, Cultural Resource and Regulatory Compliance



Powering our way of life.

Department Purpose & Goal

The Fish and Wildlife Department uses technology, innovation, strategic thinking, good stakeholder relations and skilled negotiations to ensure we are achieving compliance with our Natural Resources regulatory requirements in a safe, cost efficient and biologically sound manner while helping to maintain the long-term financial health of the District.



2023 Safety Culture

- ❖ 1 Recordable Incident to date;
- ❖ Job Site Briefs = 24 (Through June 1, 2023)
- ❖ Job Site Reviews = 42 (Currently at ~57%)
 - Goal = 25%
- ❖ Safety Meeting Attendance (2022) = 97%
- ❖ Safety Meeting Attendance Jan-Present (2023) = 100%
- ❖ Training Status Completion (2022) = 99%
- ❖ Training Status Completion Rate Jan – Present (2023) = 99%



Carlton Acclimation Facility

❖ Methow River migrating away from existing water intake structure. During extremely cold snaps typically in late February/early March the facility can be left with no to very little river water for fish acclimation. Channel migration away from the intake structure continues to occur.

❖ Current Status

- ✓ Phase 1: (Production Well)
 - Irrigation Technology and Control, Inc
 - Contract Cost per bid = \$864,030
 - Well Depth 146' (Bedrock)
 - 18" screen has arrived (install this week)
 - Contractor and GPUD Staff updating schedule

- ✓ Phase 2: (Construction – connecting wells to building)
 - On Hold



Video Fish Count Program

- ❖ Grant PUD is required to provide reliable fish count information by maintaining adult video fish counting equipment at both Wanapum and Priest Rapids Dams.
- ❖ In 2021 & 2022 large discrepancies in fish counts between Priest Rapids, Wanapum, and Rock Island Dams were observed.
- ❖ This information is important as it sets escapement estimates for the Upper Columbia River Basin (e.g., broodstock collections, selective fisheries, etc.).
- ❖ WDFW and Yakama Nation sent letters, recognizing activities to date to improve the Video Fish Count system, encouraging Grant PUD to make the necessary improvements for reliable and timely fish counts in 2023.
- ❖ Status Update
 - ✓ Four-Peaks Environmental Science & Data Solutions counting fish.
 - ✓ Upgrade servers and other equipment on order.
 - ✓ Automation improvements implemented.
 - ✓ Internal coordination ongoing.



Priest Rapids Project Native & Non-native Predator Removal Monitoring Program

- Focused on removal, monitoring & early detection of native, non-native & invasive species.
 - ✓ 830 locations have been sampled using a myriad of gear types (beach seines, setlines, angling, and electrofishing) covering 56 river miles of the Priest Rapids Project.
 - ✓ Monitoring & Early Detection Activities
 - Northern pikeminnow removal program.
 - Video fish counting systems at fishways.
 - Fish salvage activities (turbines, fishways, etc.).
 - Juvenile white sturgeon indexing program.
 - Annual northern pikeminnow derby.
 - Electrofishing for gas bubble trauma in resident fish.
 - Resident fish inventory every 5 years (completed in 2022).
 - ✓ Monitoring & Early Detection Summary
 - Since 2010 ~4.8 million native and non-native predators have been removed from the PRP &

No northern pike have been collected to date.



eDNA Sampling

- Use of eDNA was first implemented in 2019 within the Priest Rapid Project.
- 5 sample locations (March – October).
 - ✓ 40 total samples collected
 - ✓ Collected from backwater areas
- Samples also analyzed for non-native invasive zebra and quagga mussels.
- No positive detections to date for northern pike, zebra or quagga mussels.
- Samples are also being analyzed for Western Pearlshell and Western Ridged which are native and could be listed under the Endangered Species Act.



northern Pike Environmental DNA (eDNA) Sample Locations, Priest Rapids Project, mid Columbia River, WA.

map/data was created for informational, planning, reference and guidance purposes only. Grant PUD makes no warranty, expressed or implied related to the accuracy or content of these materials. NR GIS - 2023

No-Net-Funding – Lake Roosevelt Northern Pike Removal

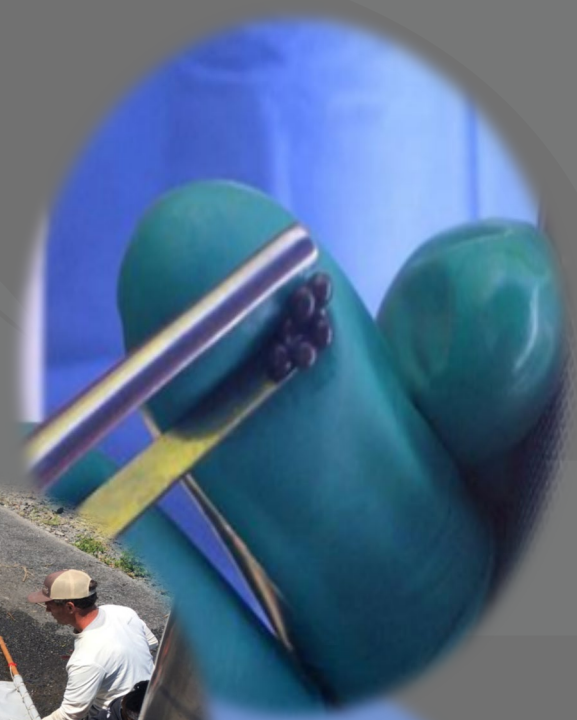
- Grant PUD provides annual contribution into a No-Net-Impact Fund (currently total ~\$664K).
- NNI funds are available for the Priest Rapids Coordinating Committee (PRCC) to use on projects they deem important for salmon and steelhead protection and enhancement.
- A total of \$750,000 has been allocated by the PRCC for Northern Pike removal efforts in Lake Roosevelt (2017-2025).



White Sturgeon Broodstock Capture

Capture of adult fish to spawn at Yakama Nation Sturgeon Hatchery (YNSH)

- Capture efforts primarily conducted below McNary Dam by guided angling & volunteer support.
- Surgical inspection to identify sex and maturity.
- Mature fish transported to YNSH.
- Fish spawned in end June/early July.

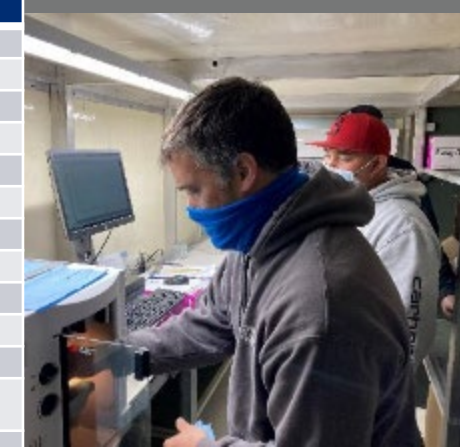


Hatchery White Sturgeon Tagging and Release

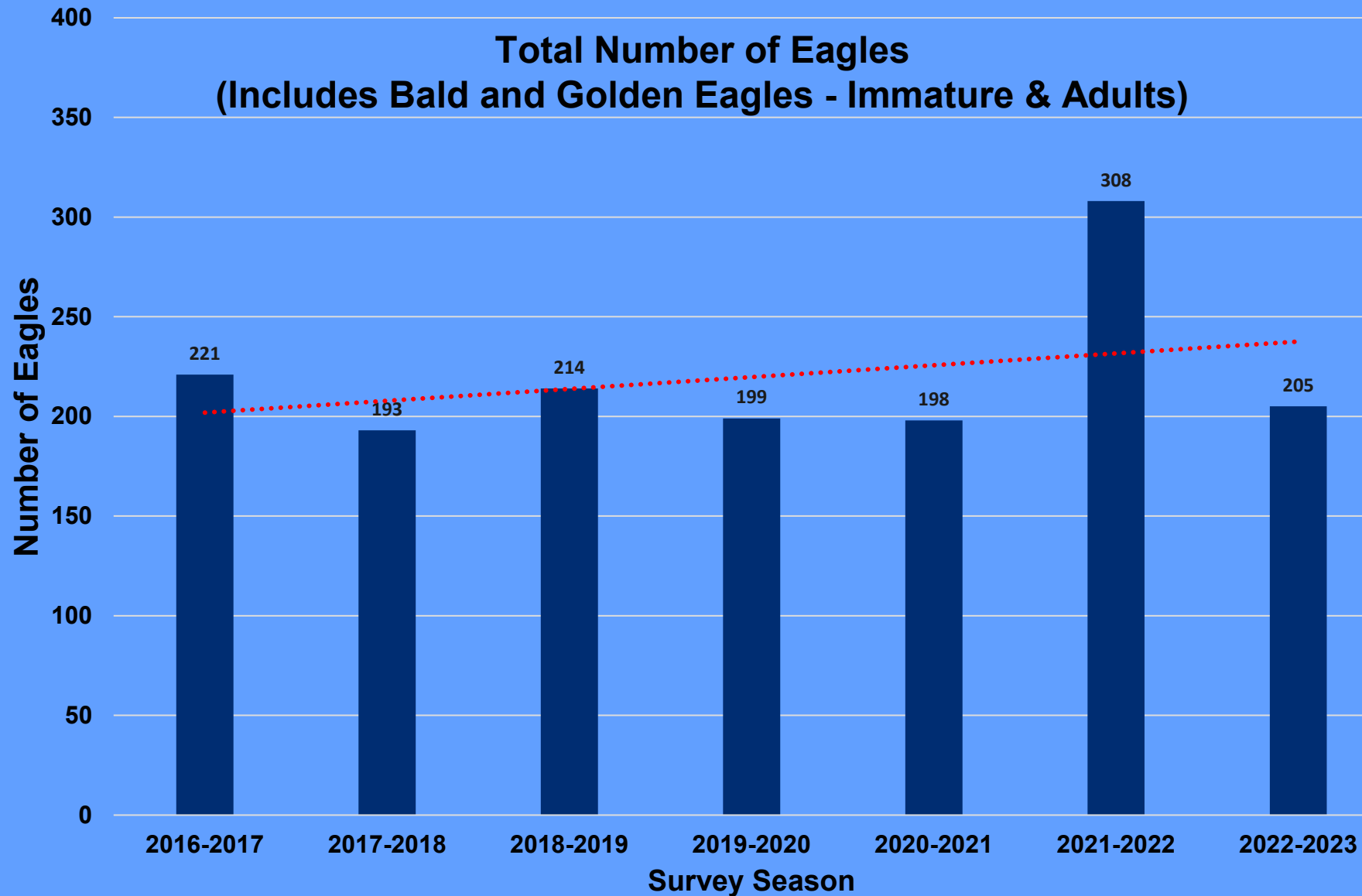
- Juvenile sturgeon raised at YNSH from July-April
- Collaborative effort by Grant, YNSH, and subconsultants
- 44,004 fish released as of 2022



Pool	Year	Abundance Estimate (95% CI)	Annual Hatchery Release Number	Cumulative Release Number
Wanapum	2011	7,015 (7,015–7,015)	7,015	7,015
	2012	2,244 (2,041–2,446)	0	7,015
	2013	4,473 (4,268–4,678)	2,264	9,279
	2014	7,994 (7,666–8,322)	5,092	14,371
	2015	9,099 (8,665–9,533)	5,007	19,378
	2016	6,980 (6,298–7,662)	2,005	21,383
	2017	7,382 (6,624–8,140)	1,999	23,382
	2018	7,440 (6,565–8,315)	1,983	25,365
	2019	7,872 (6,818–8,925)	1,767	27,132
	2020	7,065 (5,782–8,348)	411	27,543
	2021	7,667 (6,169–9,164)	936	28,489
	2022	10,809 (9,041–12,576)	2,010	30,489
Priest Rapids	2011	2,101 (2,101–2,101)	2,101	2,101
	2012	1,231 (1,009–1,452)	0	2,101
	2013	2,941 (2,721–3,161)	1,717	3,818
	2014	3,024 (2,717–3,332)	1,500	5,319
	2015	2,478 (2,225–2,731)	1,495	6,814
	2016	2,208 (1,913–2,503)	1,253	8,067
	2017	2,326 (1,986–2,667)	1,249	9,316
	2018	2,350 (1,977–2,722)	1,241	10,566
	2019	2,082 (1,653–2,510)	890	11,446
	2020	1,623 (1,098–2,148)	261	11,707
	2021	1,874 (1,311–2,437)	549	12,256
	2022	3,909 (3,211–4,606)	1,259	13,515



Eagle Surveys and Monitoring



A landscape photograph showing a range of rugged, layered mountains with distinct horizontal strata. The mountains are reflected in a calm body of water in the foreground. The sky is clear and blue. The word "QUESTIONS?" is overlaid in white text in the center of the image.

QUESTIONS?

POLICY UPDATE: TRAVEL AND NON-TRAVEL MEALS

June 13, 2023



Powering our way of life.

Agenda

To provide an update on the revised Travel Policy and new Non-Travel Meals Policy.
Includes:

- Primary Drivers
- Objectives
- Description of Changes
- Schedule

Primary Drivers

- Travel Policy has not been evaluated and updated since 2012 (except for return-to-office updates in 2022);
- Incorporate [SAO Best Practices for Travel Expenditures](#) and [AG guidance, "Eating and Drinking at Public Expense"](#);
- Strengthen internal controls; and
- Ensure consistency and equity in the application of the policy.

Objectives

- Implement clear policies and procedures
- Separate non-travel meals from Travel Policy
- Improve overall understanding through training
- Standardize process
- Improve tracking and oversight of policy exceptions
- Reduce errors in Statements of Expense

Description of Changes – Travel Policy

Topic	Revision
Travel Authorization (TA)	<ul style="list-style-type: none"> • Better defined requirements • Prior approval of arrangements is required, including all estimated costs and any exceptions. • New TA PowerApp is in development to facilitate all TA requests.
Cost Comparison	<p>New Travel Cost Comparison Form required anytime there is personal influence on business travel (e.g., combining business and personal travel, prefer alternate or higher class of travel due to personal preference, etc.). Form to be completed at the time of booking and submitted with SOE.</p>
Statement of Expense	<ul style="list-style-type: none"> • Better defined requirements • Receipt threshold for non-PCard charges decreased from \$75 to \$50. • Removed requirement to attach map if claiming mileage. Just provide start and end locations. • Expense reports must be submitted within 30 days of returning from travel.
Air Travel	<ul style="list-style-type: none"> • Clarified allowable expenses: <ul style="list-style-type: none"> ○ Coach airfare with one carry-on bag, one checked bag, and guaranteed seating. ○ Preferred/upgraded seats allowed for flight legs in excess of 4 hours. Capped at \$250 roundtrip in incremental cost. ○ In-flight Wi-Fi allowed for business purposes on flights of 2 hours or more • Clarified expectations around the use of frequent flyer programs for business travel

Description of Changes – Travel Policy

Topic	Revision
Lodging	<ul style="list-style-type: none">• Lodging may be allowed when the temporary work site is more than 50 miles from the Established HQ or Remote Work Site <u>and</u> if necessary for Grant PUD business. Added for clarity, policy was previously silent on this.• Lodging cannot exceed 150% of the Federal Per Diem maximum daily lodging rate. This has been an unwritten rule for many years and has been added to document the expectation. Up to 200% is allowed when approved as an exception.• Removed Share the Savings. It was rarely used and created an OH burden to administer.
Meals	<ul style="list-style-type: none">• Removed the 1 ½ hour rule for determining per diem. This created an OH burden to administer due to varying work schedules. Per diem will instead be determined by established travel status hours for all (6:30 am for breakfast, 12:30 pm for lunch, and 6:30 pm for dinner).• Per diem will no longer be reduced if a meal was provided at an event. This created an OH burden to administer.• Local time to be used when determining per diem (time zone changes do not apply)• Removed content related to non-travel meals and created a separate policy.
Personal Car	Employees are still responsible for ensuring their personal policy does not exclude business use but are no longer required to include Grant PUD as “also insured.”
Personal Car	Mileage for workday travel within Grant County, in excess of commuting, will be reimbursed. Incorporated reference to Local Mileage Chart. Added for clarity, the policy was previously silent on this.

Description of Changes – Travel Policy

Topic	Revision
Rental Car	Employees must obtain the lowest cost option for the type of vehicle necessary to meet the business need. Up to mid-size vehicles or equivalent are allowed.
Other Expenses	Miscellaneous expenses when in travel status are allowed when reasonable and necessary (e.g., printing, copies, shipping, etc.). Receipts are required.
Remote Work Sites	Moved to its own section (was previously under Ground Transportation). No change to the language.
Combining Business and Personal Travel	Added guidelines and incorporated requirement to complete the Travel Cost Comparison Form.
Exceptions (new)	Exceptions must have two levels of approval within the employee's chain of command (e.g., supervisor and manager, manager and senior manager, senior manager and managing director), up to the General Manager. Accounting will maintain an exception log and provide a quarterly report to Executive Management.
Dispute Resolution (new)	Process provided for disputes regarding the application of this policy.
Non-Compliance (new)	Defined non-compliance and how it will be addressed.

New Non-Travel Meals Policy

Key Principles	Purpose
Refreshments not allowed	Not a reasonable or necessary business expense or use of public funds.
Meals allowed under certain conditions only and with prior approval from the Senior Manager or above.	Must be a reasonable and necessary business expense and use of public funds
The cost of meals cannot exceed 150% of federal per diem for the applicable meal per person, including taxes (does not include tip not to exceed 20% and any delivery charges).	Clarity, consistency, and equity
Specifies when meals are not allowed, which includes: <ul style="list-style-type: none"> • Employee birthdays, weddings, baby showers, anniversaries, or other occasions of a personal nature. • Holiday celebrations 	Not a reasonable or necessary business expense or use of public funds.
Food for retirement/farewell events for employees leaving the District are capped at \$100 and require prior approval of the Senior Manager or above.	Clarity, consistency, and equity
Exceptions to the policy may be approved by a member of Executive Management. Accounting will maintain an exception log and provide a quarterly report to Executive Management.	Consistency and equity in application of the policy. Transparency and tracking.

Schedule

June 13, 2023	Commission review
June 27, 2023	Commission approval
By June 30, 2023	<ul style="list-style-type: none">• Associated procedures finalized• Travel SharePoint site updated• TA automation complete (or equivalent process in place as an interim solution)
July 3-31, 2023	Carry out change management activities, including Districtwide training and implementation of required annual training/policy acknowledgement.
August 1, 2023	Effective date for: <ul style="list-style-type: none">• Travel Policy• Non-Travel Meals Policy• Employee Recognition Policy revision (<i>contains language related to Non-Travel Meals</i>)• Community Activity Policy revision (<i>contains language related to Non-Travel Meals</i>)• Recruitment Expenses Policy revision (<i>contains language related to Non-Travel Meals</i>)
By August 30, 2023	All employees acknowledge revised Travel Policy and new Non-Travel Meals Policy via PolicyTech.

Thank You



Powering our way of life.

Grant Common Backbone

430-10427R

Final Questions



Powering our way of life.

Why Nokia?

Two RFP's with one common outcome

- The best technical solution proposed
- Integrated Monitoring and Management solution
 - Optical layer
 - Network layer
- Capacity and scalability

Nokia price changes

Nokia proposal price difference between 2021 and 2023

- 2021 Contract \$3,779,436
- 2023 Contract \$3,663,606

- Contract Differentiating Elements
 - Total contract price reduction ↓
 - Equipment price inflation ↑
 - Training now provided ↓
 - Design work previously completed ↓
 - Two competitive public RFPs ↓
 - Performance bond between RFP and Contract ↑

Request for Proposals Scoring Matrix

Below are the categories that were scored. The score presented is the average score of the five-member review team.

Category	Responder						
	CCI	Datec	ePlus	LightRiver	Lumen	Nokia	WWT
Management Plan	2.25	2.25	1.78	2.25	2.11	1.88	1.69
Capabilities of Firm	3.66	3.56	3.38	3.75	3.66	3.78	3.66
Cost Control Experience	0.88	1.25	1.13	1.38	1.63	1.38	1.63
Client List and Client References	3.75	4.06	3.44	3.44	3.75	3.75	3.44
Equivalent Projects and Services	3.75	2.81	3.75	3.75	3.75	4.06	3.44
Key Personnel Qualifications and Relevant Experience	3.75	3.75	3.75	3.44	3.44	4.06	3.13
Support Services Organization and Capabilities	6.88	6.97	6.22	7.73	6.94	7.60	6.41
Compliance with Technical Requirements	33.45	33.91	27.56	36.44	35.58	36.65	35.94
Price / Fee Proposal for Services	1.88	1.93	1.69	2.22	2.22	2.12	1.90
Bill of Materials	0.56	0.61	0.44	0.65	0.70	0.70	0.73
Price Justification	0.13	0.13	0.50	0.38	0.69	0.50	0.56
Milestone Payment Schedule	0.25	0.56	0.69	0.69	0.75	0.69	0.75
Price score	5.78	4.81	4.75	9.00	8.90	8.76	6.55

Vendor	SCORE
NOKIA	75.92
LIGHTRIVER	75.10
LUMEN	74.11
WWT	69.82
CCI	66.94
DATEC	66.62
EPLUS	59.05



Grant PUD Cultural Resources 2023 Q1 Business Report

Grant PUD Commission Meeting
– June 13, 2023

Department Purpose and Goal

- The Cultural Resources Department is tasked with ensuring compliance with FERC regulatory requirements related to cultural resources. These include historic and prehistoric sites and Traditional Cultural Places important to the Wanapum, Yakama and CCT people. A secondary goal is to help foster the relationship between the District and the Wanapum, all in alignment with Grant PUD's safety, financial, and compliance goals.



Q4 Business Review

- **Regulatory Compliance**
 - Compliance Violations = 0
 - NCRRP Reviews = 8
 - FERC orders/notices = 0
 - Summary/Listing of filings=0
- **Safety Metrics**
 - Incidents = 0
 - Close calls = 0
 - JSRs = 25
 - Safety meeting attendance = 96%



Q1/2 Business Activities

Compliance: Archaeology/River Patrol

- Q2 stakeholder meeting focused on the 2023 archaeological monitoring schedule for the PRP, monitoring started in mid-May. 213 sites are scheduled for monitoring in 2023.
- Completed cultural Resources survey for the Red Rock substation, no resources were identified. Archaeology staff determined no effects to cultural resources for this project.
- Continuing to support Wanapum concerns and cultural resources compliance efforts for the Priest Rapids Right Bank Project. These include both TCP and Archaeological monitoring of activities with potential to effect sites.



Q1/2 Business forecast

Compliance: Wanapum Interface Office / Traditional Program

- Wanapum visited Kadlec Medical professions summit to share Wanapum uses at the confluences of the rivers.
- Wanapum hosted Matt Dannenberg, Dept of Energy Tribal Liaison, Office of Congressional and Intergovernmental Affairs.
- Planning upcoming Tri-Cities event with Wanapum participation and the WA Trust for Historic Preservation: Youth Heritage at the Manhattan Project National Historical Park.
- Attended the States, Tribes, and Government Working Group spring meeting (STGWG). Focus on long-term stewardship of Hanford areas.
- Met with Ike White, Senior Advisor of Environmental Management, Dept of Energy to provide background on Wanapum Homelands.



Q1/2 Business Activities

Traditional Program: Wanapum Heritage Center:

Wanapum Heritage Center is open to general public Thursday through Monday, while Tuesdays and Wednesdays are dedicated to local school Districts.

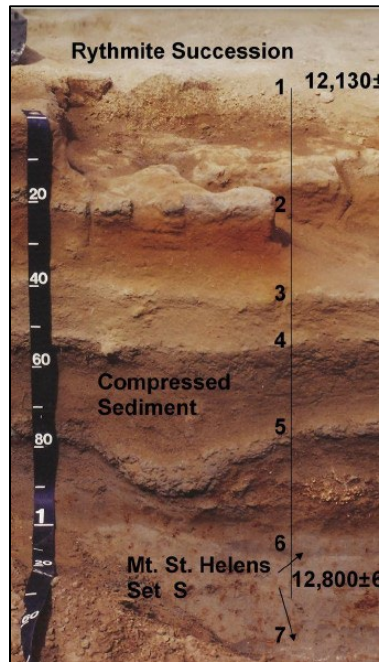
- After nearly 20 years in service the Wanapum traveling museum is going to be replaced.
- Wanapum student helpers (high school age) are starting work in June.
- New temporary showcase is installed in the welcome area of the Heritage Center. Donated collections are the focus in this area.
- Work on the Wanapum library and gift shop continues. The library will store Wanapum documents and make Wanapum information available to Wanapum people and researchers.



Q1/2 Business Review

Major Projects: Archaeology

- Stone tool source material project in collaboration with CCT is in progress



2022-23 Q4/1 Forecast

Use of Allocated Resources



Staffing –

- Welcome Alyssa Buck as the new Wanapum Interface Office Supervisor
- 2 summer interns came on board in June, this is a compliance requirement for the MOA executed for the PRREIP.



Services –

N/A

Q1/2 Business Review

Spotlight on Washington statewide predictive model:

What is it and how does it fit into our compliance program?

The screenshot displays a web application interface for "Regulatory Scoping - Preliminary Permit Analysis". The main view is an aerial map of Ephrata, WA, with a search bar at the top left containing "Ephrata, WA, 98823, USA". A "Screening Tool" overlay is visible on the left side of the map, showing a "Report" section with a "Back" button and a "Summary" section with two items: "Summary - Parcel Boundaries (1)" and "Summary - Cultural Resource Predictive Model (1)". The "Survey Prediction" is "Survey Contingent Upon Project Parameters: Moderately Low Risk" and the "Level of Confidence" is "3 - High Confidence". The "Area" is listed as "N/A". Below the summary, there is a "Summary - Township/Range/Section (1)" section with an "Upload" button and a text input field for "Upload shapefile to include in analysis". A search result popup is also visible on the map, showing "Grant PUD Ephrata, 30 C St SW, Ephrata, WA, 98823, USA" with a "Zoom to" button. The bottom right corner of the map area contains the text "Washington State Department of Natural Resources".



Q1/2 Business Review

Spotlight on Washington statewide predictive model:

What is the Washington statewide predictive model?

- A graphic tool that applies a broad variety of resource data to predict the location of archaeological sites across the landscape.

Why do we need a predictive model?

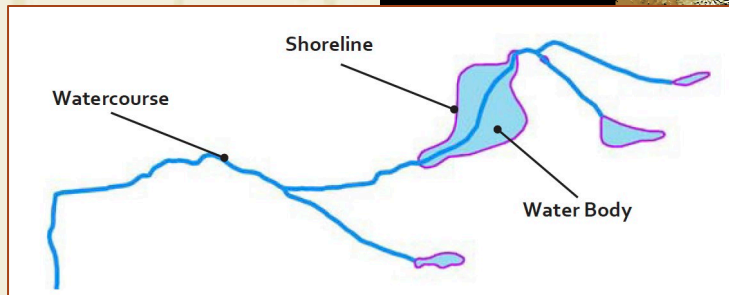
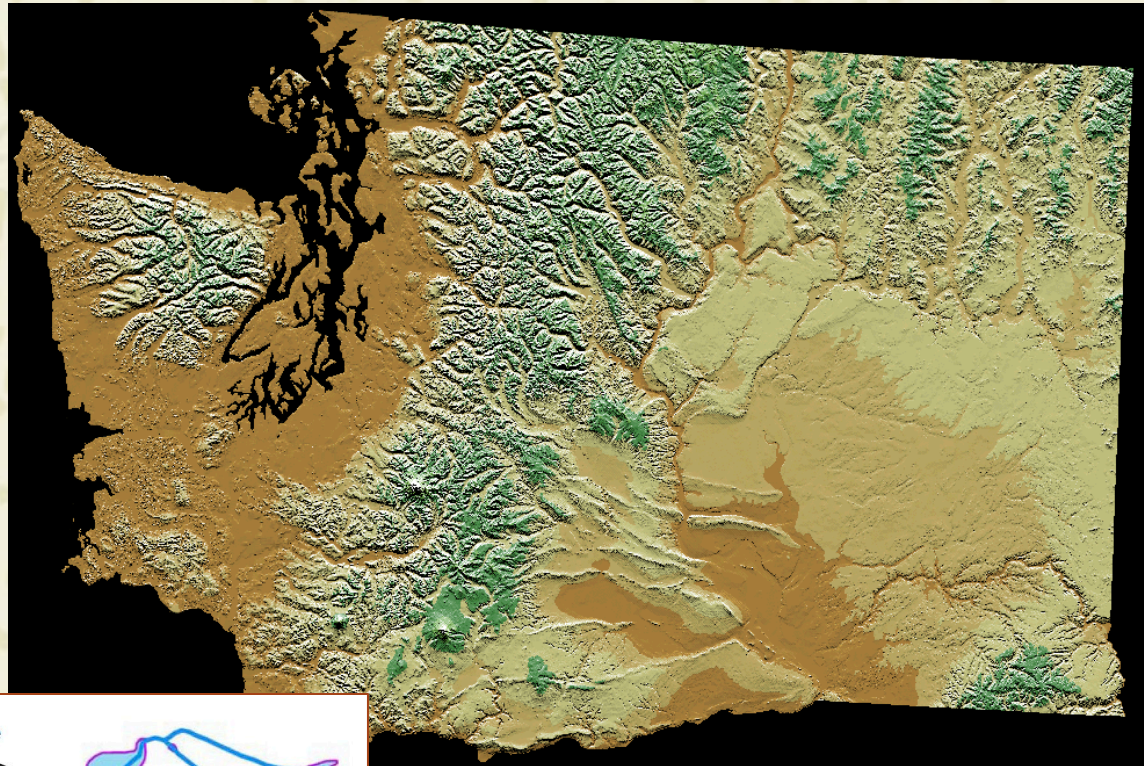
- Our license requires that we consider the effects of our activities on cultural resources and the model provides a simple means of determining the potential to encounter cultural resources in our day-to-day work.
- It also allows resource managers to understand the level of risk when deciding when a field review on a project may be warranted.

Q1/2 Business Review

Spotlight on Washington statewide predictive model:

7 data classes were used to develop the model on a grid-based system

- Elevation
- Slope Percent
- Aspect
- Distance to Water
- Geology
- Soils
- Landforms

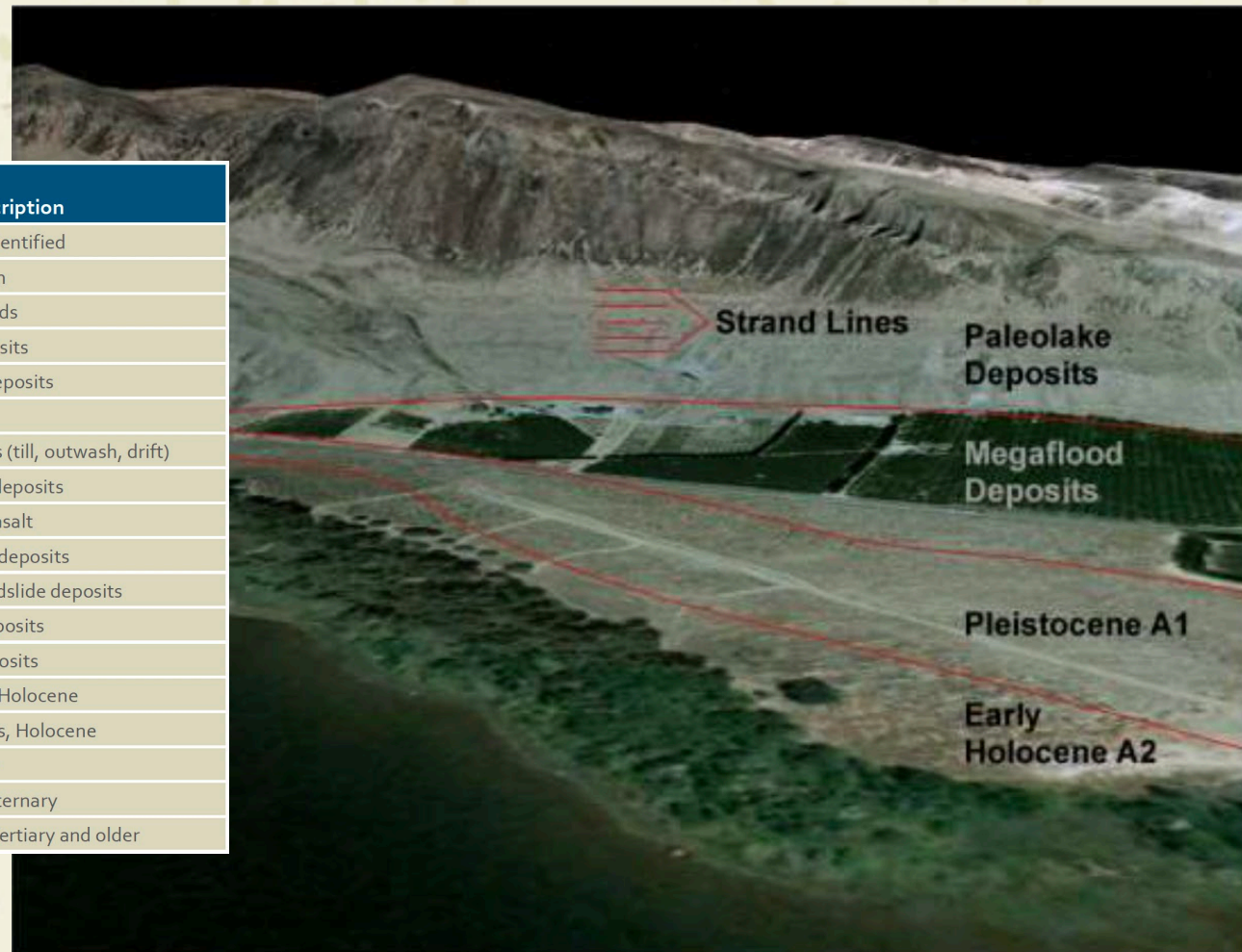


Q1/2 Business Review

Spotlight on Washington statewide predictive model:

Data classes

Geology Group Number	Geology Description
0	Water/Ice/Unidentified
1	Alluvium
2	Dune sands
3	Talus deposits
4	Alluvial fan deposits
5	Loess
6	Continental glacial deposits (till, outwash, drift)
7	Alpine glacial deposits
8	Miocene basalt
9	Outburst flood deposits
10	Mass wasting and landslide deposits
11	Peat bog deposits
12	Terrace deposits
13	Beach deposits, Holocene
14	Lacustrine deposits, Holocene
15	Lahars
16	Bedrock, Quaternary
17	Bedrock and deposits, Tertiary and older



Q1/2 Business Review

Spotlight on Washington statewide predictive model:

- How did we build the model?

Bayesian Probability Equation:

$$P(A|Ev) = \frac{(AP_1)(AP_2)(AP_3)(AP_4)(AP_5)(AP_6)(AP_7)(RAP)}{(TP_1)(TP_2)(TP_3)(TP_4)(TP_5)(TP_6)(TP_7)}$$

where:

$P(A Ev)$ =	Probability of an archaeological discovery, given the environmental vector at the cell;
AP =	Archaeology Probability for each environmental group at the cell;
RAP =	Reference Archaeology Probability (number of archaeological-site cells divided by the total number of cells in the study area);
TP =	Total Area Probability for each environmental group at the cell;
1-7 =	Environmental factors/characteristics at the cell.

Geology Group 6
Slope Group 2
Elevation Group 4
Aspect Group 5
DTW Group 1
Soils Group 10
Landform Group 11

Geology Group 2
Slope Group 4
Elevation Group 3
Aspect Group 3
DTW Group 4
Soils Group 8
Landform Group 5

Geology Group 6

Total Area Probability (0.775000)

Archaeology Probability (0.806382)

Slope Group 2

Total Area Probability (0.360714)

Archaeology Probability (0.249387)

Elevation Group 4

Total Area Probability (0.330935)

Archaeology Probability (0.423274)

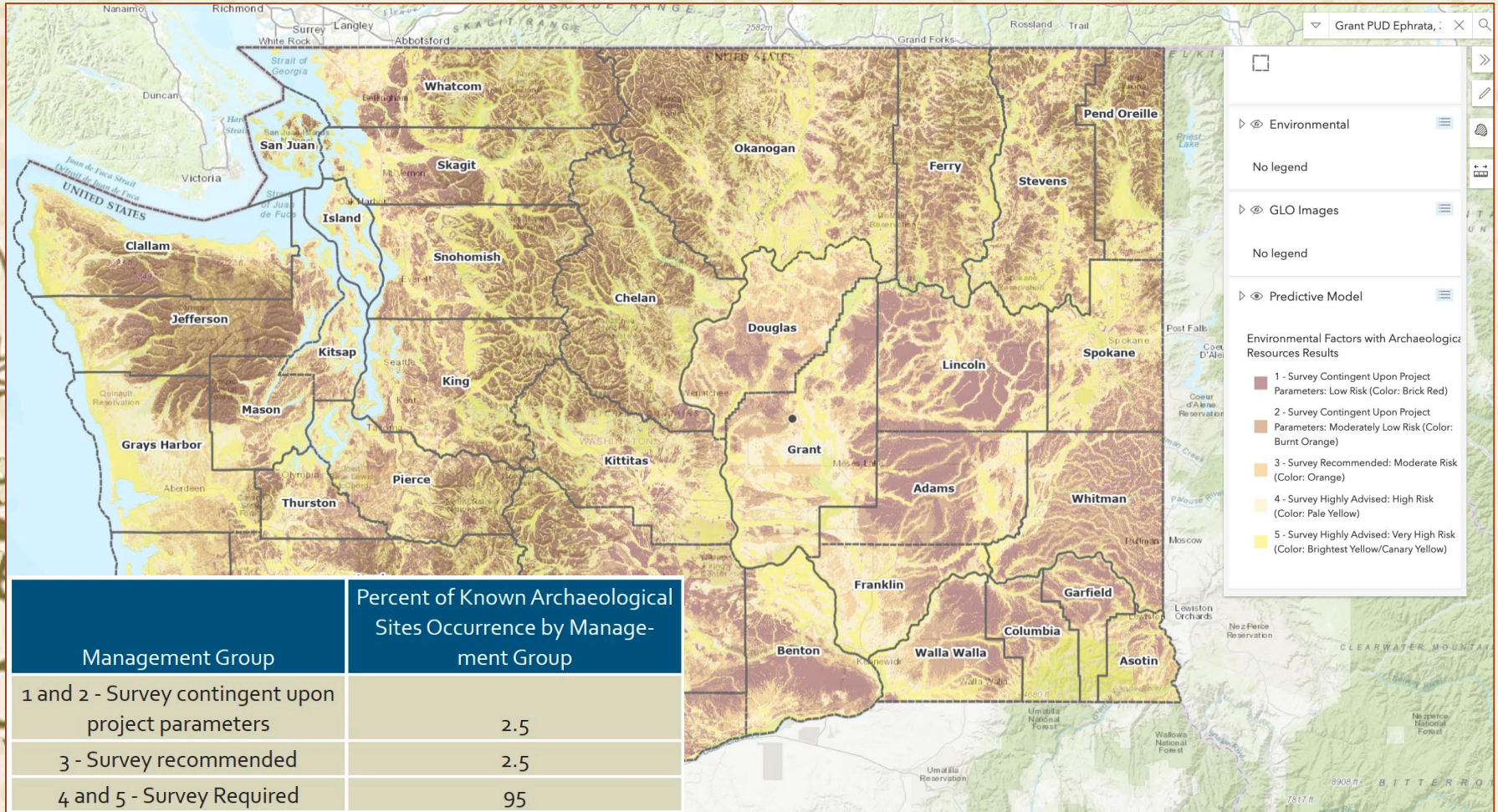
Etc.

Figure 2. Example Probabilities for a Single Grid Cell

Q1/2 Business Review

Spotlight on Washington statewide predictive model:

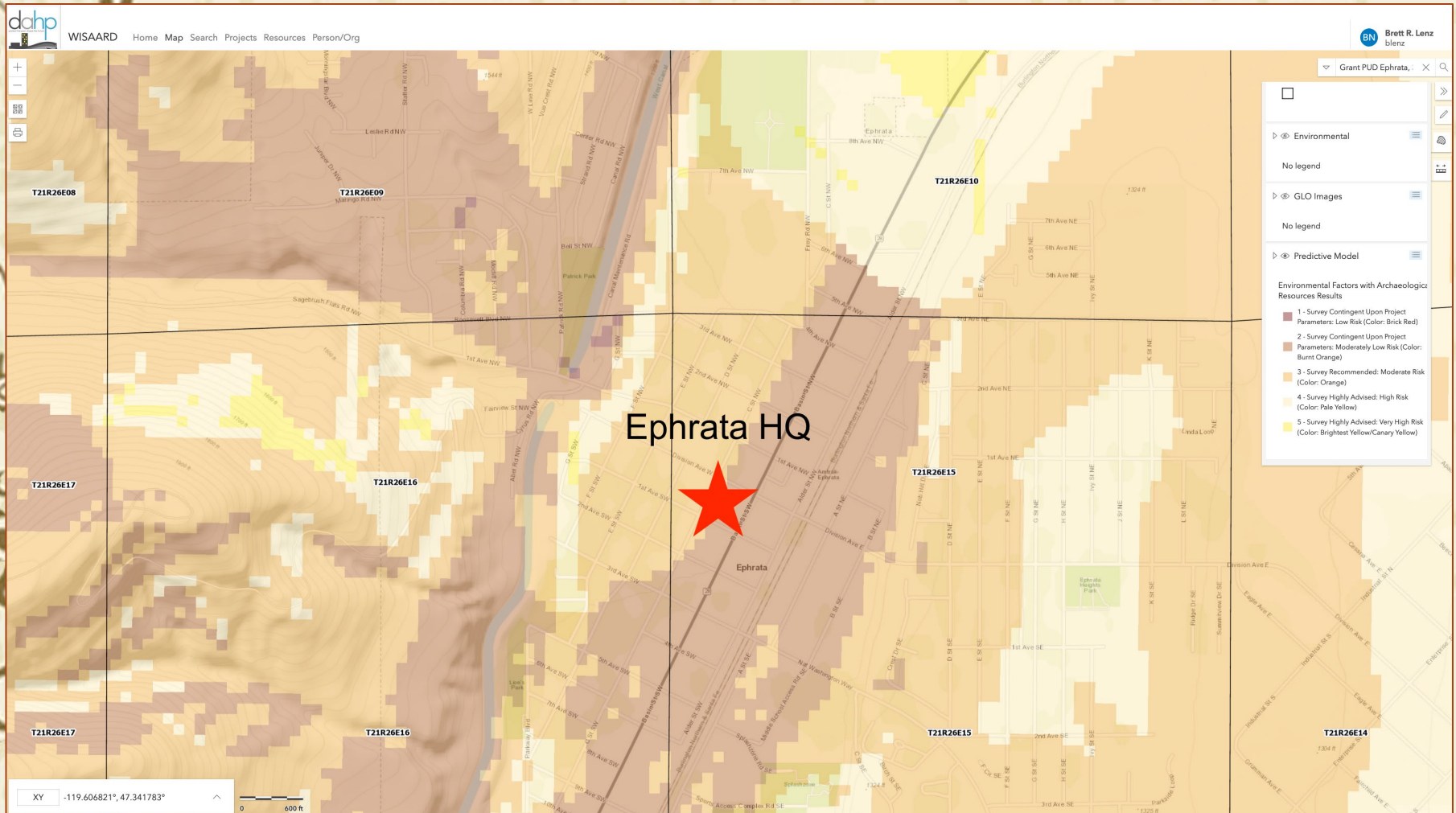
Model with all resource values applied:



Q1/2 Business Review

Spotlight on Washington statewide predictive model:

Archaeological Probability at Ephrata Headquarters



Except:

Artifact found 12 feet deep by city workers around 1960 while digging a sewer line on Basin St..



Dr. Dennis Stanford, Smithsonian museum with Clovis artifact



2023 Q1/2 Forecast

- Questions?

Community Engagement Report

Commission Presentation
June 13, 2023

Annette Lovitt, *Community Engagement, Public Affairs Lead*

Rosalie Black, *Marketing, Public Affairs*



Powering our way of life.

Agenda

Community Outreach

- Community Engagement Strategy
- Summer Fairs, Festivals and Fun
- Grant County Fair

Educational Outreach

- Solar Car Races
- Foundation for Water & Electric Education (FWEE) x2!
- North Central Education Service District (NCESD)
- So much more.....

Marketing Messages

- Marketing Report
- Fiber Marketing

Big 3 in 2023

- External Affairs Goal
- 509River.org

External Affairs and Communications Structure & Personnel



Chuck Allen
Senior Manager



Cindy McClure
Administrative Assistant

Public Affairs

 <p>Christine Pratt <i>Public Information Officer</i></p>	 <p>Annette Lovitt <i>Community Engagement</i></p>
 <p>Rosalie Black <i>Marketing</i></p>	 <p>Raquel Urbina <i>Communication Specialist</i></p>



Alondra Cueto Ramirez
Intern



Caden Sheneman
Intern

Government/ Regulatory Affairs






Ryan Holterhoff
Senior Policy Analyst

Policy Management



Jessie Allemand
Policy Administrator

Records Management

 <p>Beverly Peterson <i>Records Officer</i></p>
 <p>Michelle Clark <i>Records Officer</i></p>
 <p>Angie Albertson <i>Records Compliance Specialist</i></p>

01

Community Outreach

Our 'WHY'

Community Engagement Strategy

- Meet the community where they are
- Celebrate with the community
- Assist when needed
- Educate always
- Work to be that trusted neighbor
- Do it better next time



**Demonstrate
our Values:**

Safety
Innovation
Service
Teamwork
Respect
Integrity
Heritage

Summer Fairs, Festivals and Fun

Grand Coulee

Colorama ✓

Coulee City

Coulee City Roundup ✓

Soap Lake

Suds and Sun – July 2nd

Ephrata

Sage 'n Sun – June 10th
Car Show – July 15th

Quincy

Farmer Consumer Awareness
Day – Sept 9th



George

Fourth of July festival – July 4th

Mattawa

Summer Movie Nights

Royal City

Summerfest – July 7th & 8th

Moses Lake

Winter Ag Parade – Dec 2nd

Warden

Warden Days – Labor Day

Grant County Fair

Mark your calendars!

Tuesday the 15th will be “Grant PUD” Day

Our focus this year will be on clean Hydropower with our Safety trailer demos and a few new surprises!

Volunteer at the booth and receive our limited edition 2023 shirt!

August 2023 

Su	Mo	Tu	We	Th	Fr	Sa
		1	2	3	4	5
6	7	8	9	10	11	12
13	14	15	16	17	18	19
20	21	22	23	24	25	26
27	28	29	30	31		



02

Educational outreach

The Future is BRIGHT

Solar Car Races

4 Partners + 8 School Districts + 1,256 5th graders = 2 days of STEM learning & lasting memories!



FWEE x2!

WENATCHEE • JUNE 19-23, 2023

FWEE Wenatchee Hydropower and STEM Career Academy



TRI-CITIES • JUNE 20-23, 2023

FWEE Tri-Cities STEM Career Academy



NCESD

Goal was to introduce students to tech and coding through fun, hands-on activities. PLUS it doesn't stop there! As a follow up these students can join a monthly Lunch/Learn/Power hour to investigate STEM/TECH careers!

Thanks to....

Amanda Anthony
Joshika Suresh
Amanda Hall
Lisa Hansen
Rosalie Black
Raquel Urbina
Shannon Kellam

.....for mentoring
the next generation
of STEM women!



Grant PUD's own
Amanda Anthony with
Cari Horning



Quincy Tech &
Tiara participants



TECH EXPLORATION FOR TEENS

FIVE DAYS OF CODING, COMPUTERS, STEM AND MORE

MARCH 23 | 8:30AM - NOON
COLUMBIA VALLEY TECH
MOSES LAKE, WA



DIY YOUR OWN TIARA
Learn how to circuit, code
and build your own LED
light-up tiara to show off
your tech skills



CONNECT & ASK QUESTIONS
Hang out with professional
women working in tech and
learn about their careers



**EXPLORE COMPUTER SCIENCE
AND ROBOTICS**
Experience hands-on activities
that include computer science and
robots.



So much more!



03

Marketing Messages

New strategy, more success

Marketing Report

New Social Media marketing strategy

- Reviewing monthly
- Optimizing tactics and performance
- Engaging with relevant trends
- Comparing to prior periods





@Facebook

92,988

Organic Page Reach

+341

New Followers

669

Shares

Amount of times someone shared a

1,527

Link Clicks

When someone clicked a link we

4,540

Engagements on Page

Likes, reactions, comments,

Top Performing Facebook Post YTD

*Non informational/outage related

National Lineman Day (April 2023)

792 Reactions: Post received more reactions, comments, clicks than 100% of our 50 most recent Facebook posts for

Reach 15,749: Post reached more people than 97% of 97% of our 50 most recent Facebook posts for April April



Google Ads/Fiber

Impressions

13,754  34% from previous period

Number of times ad was seen in search

Clicks

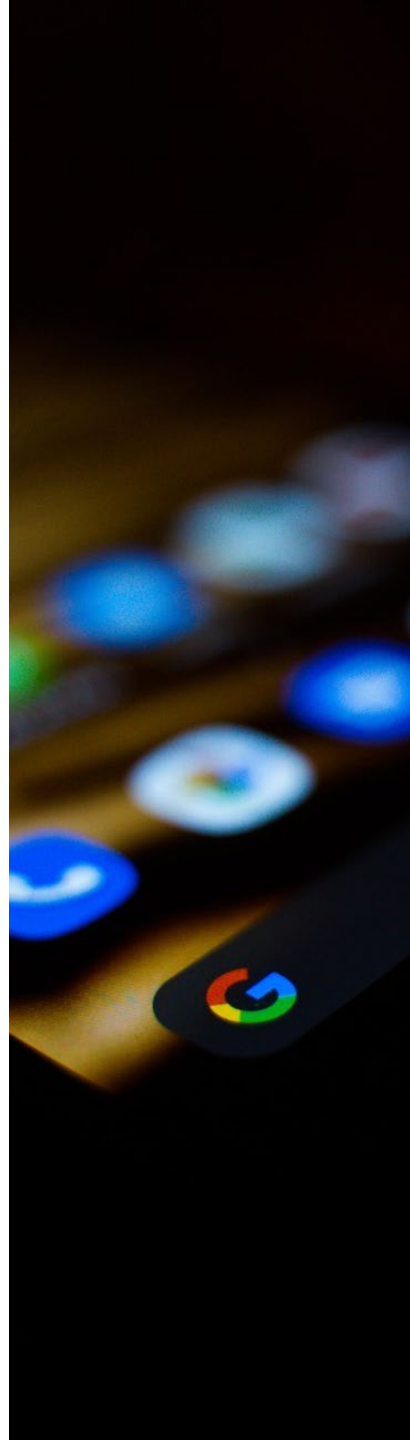
4140  109% from previous period

Times ad was clicked

CTR (Click Thru Rate-% of ad views to clicks)

30%

Average CTR for paid search campaign is 6%



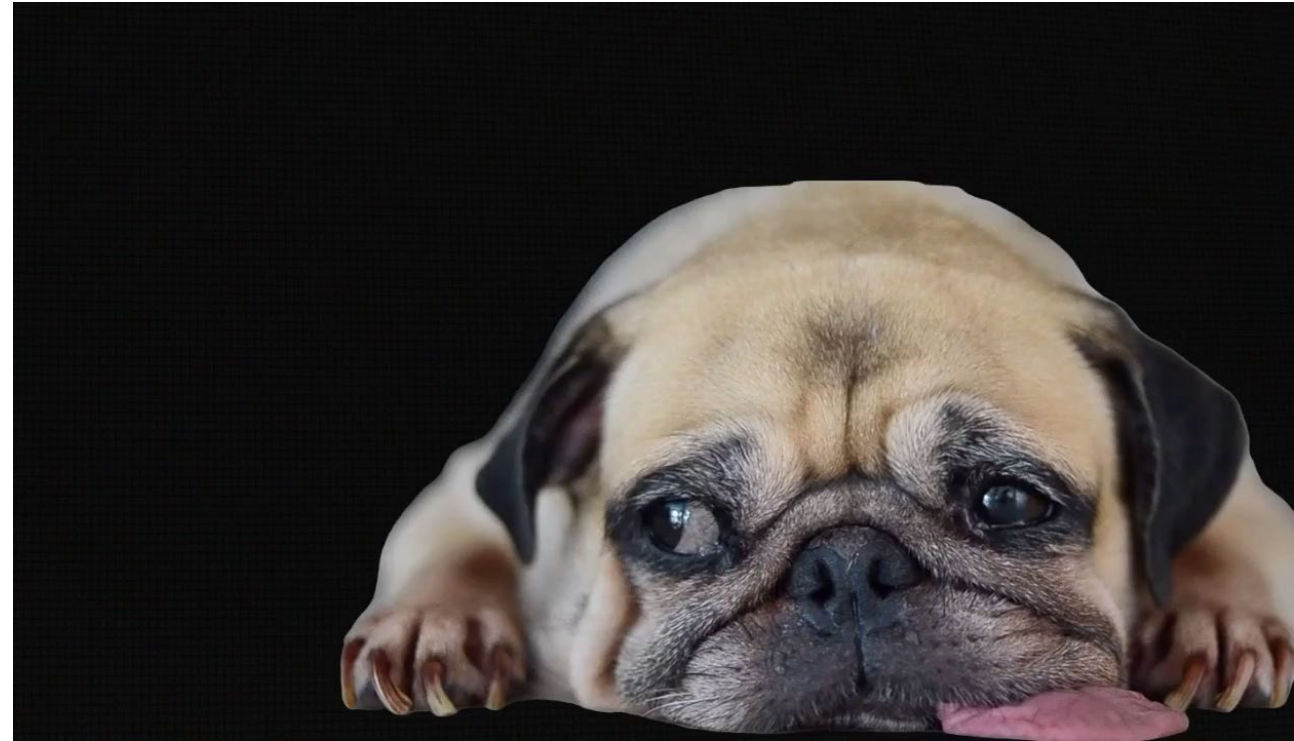
New Fiber Commercial/Ad

Instagram/Facebook

408 Clicks

55,175 Impressions

9,416 Accounts Reached



04

2023

Exciting adventures ahead

Big 3 in 2023

External Affairs Big 3 Goal:

Create a marketing plan by **March 31** targeting **Grant County residents** that will show a **20% increase** in the number of campsites used in the **Sand Hollow, Rocky Coulee, and the Jackson Creek** recreation areas by end of **Q4, 2024**.

Overall benefit – Grant PUD customers are more aware of recreation amenities and opportunities that are a benefit of hydropower.



Sand Hollow Campground

509River.org



509RIVER

Another benefit of hydropower



Powering our way of life.