

WHEN PLANTING TREES

Avoid planting new trees directly beneath power lines or too close to electrical equipment. Choose smaller-scale native or ornamental landscape trees and shrubs, with a compact growth form.



KNOW WHAT'S BELOW

Before planting a new tree, be sure to Call Before You Dig to ensure your chosen site won't conflict with underground utilities. Just dial 811



PO Box 878
Ephrata, WA
98823

VEGETATION MANAGEMENT FOR YOUR PROPERTY

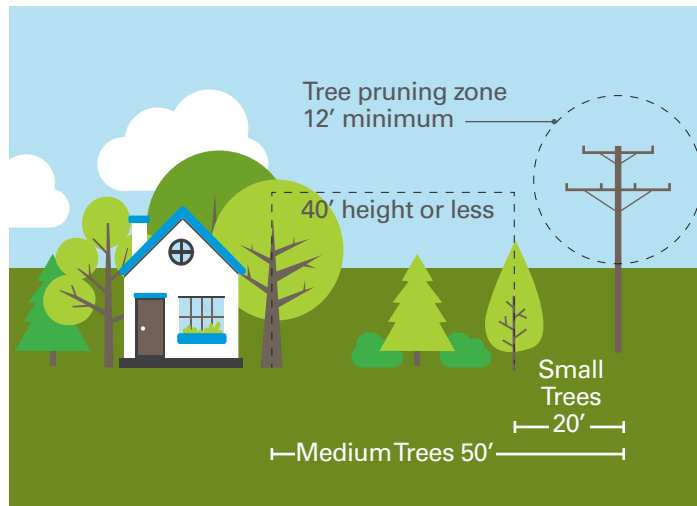




WHAT IS VEGETATION MANAGEMENT?

Grant County Public Utility District (Grant PUD) is proud to provide dependable electric power to its customers. Sometimes, trees and other vegetation can reduce our ability to deliver reliable service. A major causes of power outages are trees that fall into electrical lines, windblown branches that can contact lines as they fall to the ground, and tree limbs and shrubs that grow into power lines. Grant PUD is responsible for the trimming or removal of vegetation that may contact power lines in order to comply with local, regional, state, and federal laws for the safety of the public and to increase service reliability. There are a variety of vegetation management programs and techniques designed to keep trees and limbs from coming in contact with power lines and prevent tree-related power outages.

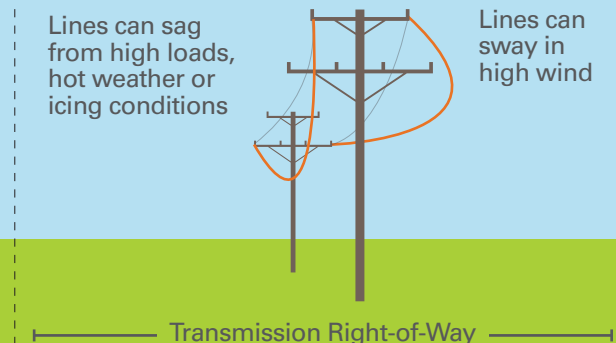
Example of proper vegetation management:



GRANT PUD'S PRACTICES

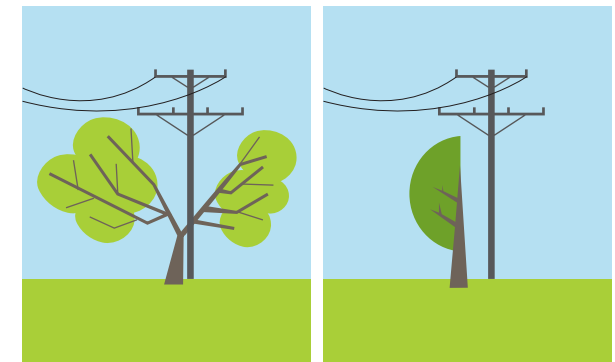
- Maintain at least 12 feet of clearance between the lines and any vegetation.
- Trim or remove any trees that pose an imminent threat of interfering with power lines.
- Remove woody invasive species or other brush that may impede access for maintenance crews.
- Apply herbicides to minimize regrowth.

Tree removal is especially important where pruning alone cannot achieve safe clearance from power lines. In some cases disease or insect infestation can result in irreversible decline, weakening trees so they are more likely to cause problems during storms and high winds.



NATURAL PRUNING METHODS

Where proper clearance can be achieved through trimming, natural pruning techniques or directional trimming will be used by tree trimming crews. Directional trimming concentrates on removing limbs and branches where the tree would normally shed them and direct future growth out and away from the electrical wires. While a newly-pruned tree might look different, natural pruning is designed to protect the health of the tree. It minimizes regrowth and reduces trimming costs.



Directional Pruning

Side Pruning

Grant PUD prefers to minimize reoccurring tree trimming costs by removing nuisance trees. Contact Grant PUD if you prefer to have a nuisance tree removed rather than trimmed. Tree removal, pruning, and herbicide application will be performed by specially-trained contract crews working for Grant PUD. All work will be done at no cost to you and the crews will clean up the site when the work is completed. Grant PUD also provides additional guidelines for sound tree selection, placement, and management.

For more information, call **509-766-2505** or visit **grantpud.org**.